

Rev. Latham E. Wright, Jr., Installed By Harrison County Presbyterian Parish

The Rev. Latham E. Wright, Jr., was installed April 29 as Moderator of the Harrison County Presbyterian Parish. This service of installation was held in the Presbyterian Church at Laconia with the participation of representatives of the eight churches of the parish, and members of the New Albany Presbytery. He and Mrs. Wright and their two daughters will move into the Manse at Elizabeth.

Mr. Wright was born in Brazil, South America, where his parents have been serving as missionaries of the Presbyterian Church U.S.A. for 33 years. He grew up speaking the Portuguese language having lived mainly in the southern states of Brazil. Before arriving in the United States in 1945 to complete his education he studied for six years in one of the outstanding Methodist schools in the state of the Brazilian cowboys of Rio Grande do Sul. While in that school he also served one year in the armed forces of Brazil since he had dual citizenship.

In the fall of 1945, Mr. Wright entered the College of the Ozarks in Clarksville, Ark., where his father, mother, sister and two brothers have also studied. On completion of his college studies Mr. Wright was employed by the College Camp (Y.M.C.A.) at Lake Geneva, Wis., for the summer period in 1947. There he met Miss Roberta Shaw who is the daughter of well-known Methodist Missionaries to Korea, and who had just completed her studies at Ohio Wesleyan University. She was born in Korea in what is now the capital of North Korea.

Served in Portugal

After the summer period Miss Shaw went to New York, where in two years she completed her Masters Degree in Sacred Music at the Union Theological Seminary. In the summer of 1949 she was married to Mr. Wright who was then in his last period of studies at the McCormick Theological Seminary in Chicago.

After graduation in the spring of 1950, Mr. and Mrs. Latham E. Wright, Jr., were invited by the Board of Foreign Missions of the Presbyterian Church, USA to work in Portugal, which geographically is the size of Indiana. Portugal is a very beautiful country with a great historical heritage. About eight million people live in that land which was called by a Portuguese poet "The garden of Europe planted by the seaside."

Among the eleven denominations working in continental Portugal stands the Presbyterian Church with a history which goes back to 1836 when the Church of Scotland first instituted work on the Island of Madeira and later on the continent. In 1910 the members of the Presbyterian community invited the help of the Presbyterian Church in Brazil, South America. From that period until 1945 the growth of the church was encouraged under new leadership.

However, during the Second World War the Presbyterian Church of Brazil decided that it would be best to invite the cooperation of the two Presbyterian Churches in the United States. So in the latter part of 1945 a Joint Committee of Presbyterian Cooperation in Portugal was formed with the cooperation of the Presbyterian Church U.S. and U.S.A.

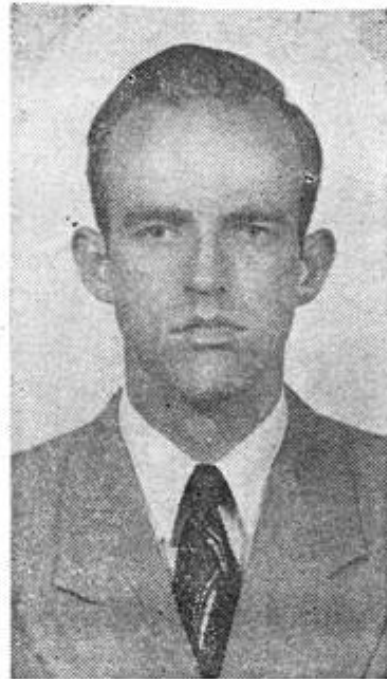
Hospital Established

In the last ten years three basic projects were undertaken by the Presbyterian Church: the organization of a Seminary in one of the suburbs of Lisbon; the organization in 1952 of an autonomous Evangelical Presbyterian Church of Portugal; the first Protestant hospital in the history of Portugal in 1955.

Rev. and Mrs. Latham E. Wright, Jr., taught in the Seminary and also worked in one of the three Presbyterian Churches in Lisbon. The Seminary, which is sponsored by the Presbyterian Church, is interdenominational, interracial and international institution.

Since the Evangelical Presbyterian Church in Portugal was organized in 1952 Rev. Wright is no longer a "missionary" to Portugal but is a "fraternal worker." This term defines the nature of the mission which is that of cooperating with an autonomous body in the evangelization of the Portuguese people.

While in Portugal two little girls were born to the Wrights, Kathleen Anne and Elizabeth Christine. Rev. Wright while on furlough from the Board of Foreign Missions of the Presbyterian Church is working toward a degree in Pastoral Theology at the Louisville Presbyterian Theological Seminary. He expects to complete his mission in the Parish and in the Seminary in the next two years.



REV. LATHAM E. WRIGHT, JR.

Moderator May 1956-Nov. 1958